



REAL LEARNING FOR REAL LIFE

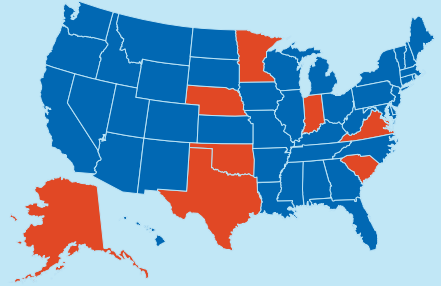
WAA MAXAY HEERARKA COMMON CORE?

Heerarka Common Core waa **ahdaaf waxbarasho oo loogu talagalay fasalada K-12** ee xisaabta iyo Ingiriiska.



43 gobol iyo Degmada Columbia ayaa hirgaliyey Common Core.

Carruurtu waxay baran waxa ay u baahan yihiin inay ogaadaan heerarka fasal ee habboon.



MANHAJKA



Manhaj wuxuu ka kooban yahay agab baris iyo barasho oo macalimiintu u isticmaalaan caawinta dhisidda qorshayaashooda casharka ee maalinlaha ah.

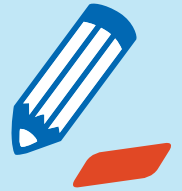
Ma jiro manhaj dejisan Common Core.

Common Core, **macalimiintu wali waa abuuri karaan qorshayaal cashar kuna sargoyn karaan barista buuxinta baahiyaha ardayda gaar gaarka ah fasalkooda waxbarasho.**

QIIMAYN = IMTIXAAN

Qiimayntu waa imtixaanka waafaqsan Common Core kaasi oo cabbiraya u diyaarsanaanta ardayda ee kuuliyada iyo shaqada. Gobolkeena, waxaynu isticmaalnaa qiimaynaha Smarter Balanced.

Smarter Balanced wuu ka fiican yahay qiimayntii/imtixaankii hore sababtoo ah wuxuu si qotodheer u cabbirayaa xirfadaha barasho, sida fekerka dhabta ah iyo dhib xallinta. Carruurtu waxay fursad u haysan inay ku isticmaalaan aqoontooda dhibaatooyinka dhabta ah imtixaankan.



WA MAXAY MACAAMILKA WAYN?



Waxaynu ku nool nahay dhaqaale adduun oo isku xidhan. Common Core wuxuu xaqiijin doonaa in carruurtu waddanka oo dhan lagu hayo heerar isku mid ah. Haddii aad ka guurto Tacoma, Washington una guurto Los Angeles, CA filashooyinka barasho ee imahaaga waxba iska beddeli maayaan.

Common Core waxa la soosaaray iyada oo la isticmaalayo heerarka barasho ee ugu wixtarka badan oo laga soo qaatay gobolada iyo waddamada ugu dadaalka badan.

Hadda, Washington waxay leedahay **25,000 shaqo oo aan buuxin** oo u baahan shaqaale xirfad sare - tiradaasina waxa **la saadaalyey inay gaadho 50,000 marka la gaadho 2017.**

Waxa jira shaqooyin u baahan in la buuxiyo, Common Core-kuna wuxuu ka caawinayaa u diyaarinta ardayda Washington inay noqdaan qaar buuxin kara shaqooyinkan.

